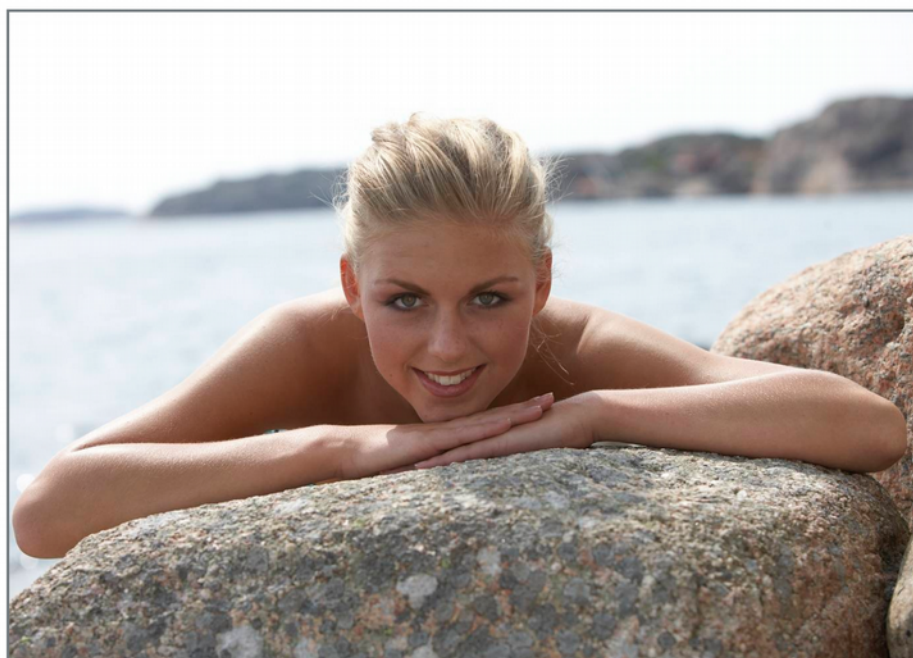




MARIA  
ÅKERBERG

DEEPSKIN ORGANICS



FACIAL PRODUCTS

DERMANORD  
SKIN CARE

### Contents

Cleansing	Precleansing Oil Gentle	3
	Cleansing Clay	4
	Olive Cleansing	5
	Foaming Wash Clearing	6
	Foaming Wash Gentle	7
	Eye Makeup Remover	8
Toner	Flower Freshener	9
	Neroli Freshener	10
	Lemon Freshener	11
Serum	Serum Antirouge	12
	Serum C	13
	Serum Moist	14
	Serum Clearing	15
	Aloe Vera Barbadensis	16
Facial Oil	Coldpressed Jojoba Oil	17
	Royal Facial Oil GLA	18
	Royal Facial Oil Gentle	19
	Royal Facial Oil Supplement	20
	Royal Facial Oil Clearing	21
	Royal Facial Oil Moist	22
	Royal Facial Oil More	23
Eye	Eye Cream	24
	Eye Cream More	25
	Eye Gel	26
	Eye Balm	27
Cream	Face Lotion Moist	28
	Face Lotion Clearing	29

## FACIAL PRODUCTS

Cream	Face Lotion More	30
	Face Lotion Supplement	31
	Face Protection	32
	Face Dream	33
	Night Cream	34
	Night Cream More	35
Balm	Face Balm Clearing	36
	Face Balm More	37
	Face Balm Moist	38
	Face Balm Gentle	39
	Face Balm Supplement	40
	Lip Care	41
	Lip Care Outdoor	42
Exfoliation	Papaya Peeling	43
	AHA & Jojoba Peeling	44
Mask	Blueberry Seed Mask	45
	Face Mask Moist	46
	Face Mask More	47
	Face Mask Gentle	48
	Face Mask Clearing	49
	Dark Chocolate Mask	50
Facial Kit	Facial Kit Normal Skin	51
	Facial Kit Oily Skin	52
	Facial Kit Mature Skin	53
	Facial Kit Sensitive Skin	54

## Precleansing Oil Gentle

- Cleansing oil for sensitive skin
- Basic cleansing for those who use makeup with mineral oil and silicone

Precleansing Oil Gentle is a cleansing oil for all skin types, even sensitive skin. Basic cleansing for you who use makeup with mineral oil and silicone.

Precleansing Oil Gentle contains Castor Oil and Olive Oil that remove makeup and dirt. Essential oils of Cypress and Neroli strengthens the skin.

Works well as basic cleanser to remove theatrical makeup. Coldpressed Jojoba Oil is recommended for removing waterproof mascara.

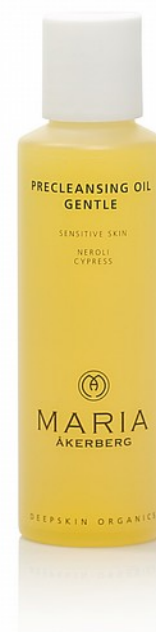
### Directions for use:

Dispense Precleansing Oil Gentle on a moist cotton round and remove your makeup with soft, circular movements. If you prefer, you can also apply Precleansing Oil Gentle with your fingers.

Follow up with Foaming Wash or Cleansing Clay and rinse off with a hot towel or sponge of cellulose. Follow up with suitable Freshener.

If you are going to exfoliate your skin with AHA & Jojoba Peeling, you do not need to use any other product after Precleansing Oil Gentle.

Self-preserving system.



*Ingredients: Helianthus Annuus (Sunflower) Seed Oil, Olea Europaea (Olive) Fruit Oil, Ricinus Communis (Castor) Seed Oil, Butyrospermum Parkii (Shea) Butter, Simmondsia Chinensis (Jojoba) Seed Oil, Citrus Aurantium (Bitter Orange) Flower Oil, Cupressus Sempervirens (Cypress) Oil, Rosmarinus Officinalis (Rosemary) Leaf Oil, Limonene\*, Linalool\*. \*From the essential oils.*

## Cleansing Clay

- Balancing cleansing cream for mixed and oily skin
- Removes makeup

Cleansing Clay is a balancing cleansing cream with a content of mineral-rich White Clay, Castor Oil and essential oil of Peppermint. Suitable for oily and blemished skin.

White Clay is strengthening for the connective tissue.

Castor Oil is a fatty oil which the skin has difficult absorbing, it helps cleansing the skin before it is rinsed off.

Ordinary soap and water clogs pores and prevents excess oil, that causes pimples, from coming out. It also dries out the skin so that it ages faster and is less protected. It is important for an oily skin not to dry out since it then can start producing even more oil, which creates a vicious cycle.

Cleansing Clay cleans the skin and removes makeup.

### Directions for use:

Distribute Cleansing Clay on dry skin. Massage with gentle, circular motions. Rinse off with lukewarm water and use a sponge of cellulose for best result.

Follow with suitable Freshener (facial toner).

Self-preserving system.



*Ingredients: Aqua Purificata/Water, Olea Europaea (Olive) Fruit Oil, Cetearyl Alcohol, Glyceryl Stearate Citrate, Glyceryl Caprylate, Glycerin (Vegetable), Sodium Levulinate, Sodium Anisate, Sodium PCA, Xanthan Gum, Citrus Aurantium (Petitgrain) Leaf Oil.*

## Olive Cleansing

- Cleansing cream for dry, sensitive and mature skin
- Removes makeup
- Can be used without water

Olive Cleansing is a cleansing cream with Olive Oil for dry, sensitive and mature skin.

Olive Cleansing cleans the skin and removes makeup.

Cold pressed Olive Oil slowly penetrates the skin and dissolves dirt and impurities before it is rinsed off. The oil comes from the process of olives being "first cold pressed" (olive oil extra virgin) which means that it contains Vitamin E.

Bitter Orange Oil (Petitgrain) is balancing and antiseptic.

### Directions for use:

Distribute Olive Cleansing on dry skin. Massage with gentle, circular motions. For best result, rinse off with lukewarm water and use a sponge of cellulose. Alternatively, Olive Cleansing can be wiped off with a facial tissue.

Finish with suitable Freshener (facial toner).

Self-preserving system.

*Ingredients: Aqua Purificata/Water, Olea Europaea (Olive) Fruit Oil, Cetearyl Alcohol, Glyceryl Stearate Citrate, Glyceryl Caprylate, Glycerin (Vegetable), Sodium Levulinate, Sodium Anisate, Sodium PCA, Xanthan Gum, Citrus Aurantium (Petitgrain) Leaf Oil.*



## Foaming Wash Clearing

- A foaming cleansing gel for normal and combination skin
- Removes makeup (do not use on eyes, use a product suitable for removing eye makeup)
- Not for sensitive skin

Foaming Wash Clearing is a foaming cleansing gel for normal/combination skin that is not sensitive.

It is based on cleansing ingredients derived from corn and coconut.

Essential oils from Grapefruit, Oregano, Thyme, Cinnamon and Lavender act cleansing and antiseptic.

### Directions for use:

Mix a small amount of Foaming Wash Clearing with water and lather before applying, or put directly on moist skin. Rinse off with lukewarm water.

Finish with suitable Freshener (facial toner).

Self-preserving system.

*Ingredients: Aqua Purificata/Water, Decyl Glucoside, Sodium Coco Sulfate, Sodium Lauroyl Oat Amino Acids, Isostearamidopropyl Morpholine Lactate, Cocamidopropyl Betain, Glycerin (Vegetable), Sodium Levulinate, Sodium Anisate, Guar Hydroxypropyl Trimonium Chloride, Citrus Decumana (Grapefruit) Oil, Rosmarinus Officinalis (Rosemary) Leaf Extract, Lactic Acid, Limonene\*. \*From the essential oils.*



## Foaming Wash Gentle

- A foaming cleansing gel for sensitive skin
- Removes makeup

Foaming Wash Gentle is a foaming cleanser for sensitive skin.

Foaming Wash Gentle is based on cleansing ingredients from corn and coconut and essential oils of Orange, Lavender, Neroli and Olibanum.

### Directions for use:

Mix a small amount of Foaming Wash Gentle with water and lather before applying or put directly on moist skin. Rinse off with lukewarm water.

Finish with suitable Freshener (facial toner).

Self-preserving system.

*Ingredients: Aqua Purificata/ Water, Decyl Glucoside, Sodium Lauroyl Oat Amino Acids, Sodium Coco Sulfate, Cocoamidopropyl Betaine, Glycerin (Vegetable), Stearamidopropyl Morpholine Lactate, Guar Hydroxypropyl Trimonium Chloride, Sodium Levulinate, Sodium Anisate, Lactic Acid, Lavandula Officinalis (Lavender) Peel Oil, Citrus Sinensis (Sweet Orange) Peel Oil, Citrus Aurantium (Bitter Orange) Flower Oil, Citrus Aurantium (Bitter Orange) Leaf Oil, Olibanum, Limonene\*, Linalool\*. \*From the essential oils.*





## Eye Makeup Remover

- Cleanser for eyes and lips

Eye Makeup Remover is a gentle cleanser for the skin around the eyes and lips. It gently removes your makeup without the need to rub.

Eye Makeup Remover is suitable for everyone. But, if you use waterproof eye makeup products, we recommend Coldpressed Jojoba Oil.

### Directions for use:

Use Eye Makeup Remover on a dry cotton round and wipe down the area where you want the makeup removed. Feel free to rinse your eyes with water afterwards, but it is not necessary.

No oily residue is left on the skin. Eye Makeup Remover does not remove waterproof mascara.

Self-preserving system.

*Ingredients: Aqua Purificata/Water, Olea Europaea (Olive) Fruit Oil, Cetearyl Alcohol, Glyceryl Stearate Citrate, Glyceryl Caprylate, Glycerin (Vegetable), Sodium Levulinate, Sodium Anisate, Simmondsia Chinensis (Jojoba) Seed Oil, Xanthan Gum, Sodium PCA, Lactic Acid, Rosmarinus Officinalis (Rosemary) Leaf Extract*



## Flower Freshener

- Facial toner for all skin types, especially for mature skin
- Antiseptic, calming and regenerating

Facial toner with hydrating Rose Water and purifying Sage Water for all skin types.

Moisturising facial toner without alcohol, ends the cleansing process and prepares the skin for upcoming products.

The herbal waters from Sage and Rose are from the latest harvest. Soil quality and weather conditions adds character to the herbs and thereby the herbal water. Herbal water is an infusion (like strong tea) of herbal leaf and distilled water. The scent is reminiscent of a summer meadow.

The scent of herbal water may change slightly from the date you opened the bottle.

A natural bottom sedimentation occurs on all herbal water.

### Directions for use:

Freshener is always used after cleansing.

Put Freshener on a moistened cotton round and distribute on your face.

Or, spray directly onto your face and then apply oil and/or cream.

Freshener is also used for eye compresses, as a moisturising spray or refresher!

For clean skin, using only Freshener is not enough. Freshener is used after any of our cleansing products to neutralise the drying effects of water and to slightly tighten pores.

Self-preserving system.

*Ingredients: Rosa Damascena (Rose) Flower Water, Salvia Officinalis (Sage) Water, Glycerin (Vegetable), Sodium Levulinate, Sodium Anisate, Lactic Acid.*



## Neroli Freshener

- Facial toner for all skin types, even sensitive skin
- Balancing

Facial toner with balancing Neroli water for all skin types.

Moisturising facial toner without alcohol, which ends the cleansing process and prepares the skin for other products.

The herbal water in the Freshener is made from flowers from orange trees and certified by the Soil Association. Soil quality and weather conditions put character to the herbs and thereby the herbal water. Other raw materials are certified by BDIH.

Please note that there is a natural sedimentation and the Neroli Freshener is slightly cloudy if not shaken occasionally. There is nothing wrong with the product, only proof of being a genuine product.

A natural sedimentation occurs on all herbal water.

### Directions for use:

Freshener is always used after cleansing.

Put Freshener on a moistened cotton round and distribute on your face.

Or, spray directly onto your face and then apply oil and/or cream.

Freshener is also used for eye compresses, as a moisturising spray or refresher!

For clean skin, using only Freshener is not enough. Freshener is used after any of our cleansing products to neutralise the drying effects of water and to slightly tighten pores.

Self-preserving system.

*Ingredients: Aqua Purificata/Water, Glycerin (Vegetable), Sodium Levulinate, Sodium Anisate, Citrus Aurantium (Bitter Orange) Flower Oil, Caprylyl/Capryl Wheat Bran/Straw Glycosides, Fusel Wheat Bran/Straw Glycoside, Polyglyceryl-5 Oleate, Sodium Cocoyl Glutamate, Glyceryl Caprylate, Limonene\*, Linalool\*, Farnesol\*, Geraniol\*.  
\*From the essential oils.*



## Lemon Freshener

- For mixed and oily skin
- Contains essential oils and extract of Lemon

Facial toner with Lemon and Aloe Vera for mixed and oily skin.

A moisture retentive facial toner without alcohol, which ends the cleansing process and prepares the skin for upcoming products.

Contains extract of Lemon, essential oils, mineral salts and micro-nutrients. Lemon Water is extracted through high pressure steam distillation.

### Directions for use:

Freshener is always used after cleansing.

Put Freshener on a moistened cotton round and distribute on your face.

Or, spray directly onto your face and then apply oil and/or cream.

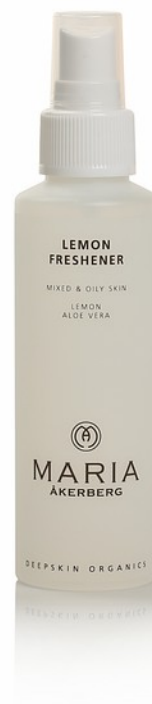
Freshener is also used for eye compresses, as a moisturising spray or room freshener!

For clean skin, using only Freshener is not enough. Freshener is used after any of our cleansing products to neutralize the drying effects of water and to slightly tighten pores.

Self-preserving system.

*Ingredients: Citrus Limon (Lemon) Fruit Water, Aloe Barbadensis Leaf Juice Powder, Glycerin (Vegetable), Sodium Levulinate, Sodium Anisate, Lactic Acid, Linalool\*, Limonene\*.*

*\*From the essential oils.*



## Serum Antirouge

- Moisturising serum
- Horse chestnut prevents superficial blood vessels and is suitable for skin with rosacea
- Easily absorbed

Serum Antirouge is a moisturising serum with Horse Chestnut in combination with Poria, Phragmites (reed), Cypress and Neroli to suit sensitive skin.

Extracts from the Horse Chestnut fruit strengthens blood vessel walls, facilitates blood flow and have anti-inflammatory properties.

Poria Mushroom and Phragmites increases the skin's resilience.

Cypress strengthens blood vessels.

Neroli acts calming, healing and balancing.

Serum Antirouge is a very economical product and is easily absorbed by the skin.

### Directions for use:

Used under a facial oil or cream, 1-2 times per day.

Use eye cream around the eye area and one of our creams on your face.

Regular use of Serum Antirouge is required for best result.

Self-preserving system.



*Ingredients: Aqua Purificata/Water, Phragmites Kharka Extract, Poria Cocos Extract, Aesculus Hippocastanum (Horse Chestnut) Bark Extract, Glycerin (Vegetable), Sodium Levulinate, Sodium Anisate, Biosaccharide Gum-4, Biosaccharide Gum-2, Xanthan Gum, Cupressus Sempervirens (Cypress) Oil, Citrus Aurantium (Bitter Orange) Flower Oil, Rosmarinus Officinalis (Rosemary) Leaf Extract, Limonene\*, Linalool\*, Geraniol\*, Farnesol\*. \*From the essential oils.*

## Serum C

- Energy boost for tired skin
- Perfect after sunbathing
- Brightening effect on dark spots
- Anti-inflammatory

Serum C is a moisturising serum, an energy boost for dull skin and suitable for all skin types.

Serum C is a perfect after-sun product, it is anti-inflammatory and slows down skin aging. When used regularly, Serum C has a brightening effect on dark spots.

Serum C is a moisturising serum. Use under any of our facial creams.

Serum C consists to 10% of a unique stabilized concentrate from oranges. In addition to Vitamin C, Serum C contains Vitamin A, B1, B2, B6, H, PP and amino acids, AHA (fruit acids) and Polyphenols.

Vitamin A stimulates the formation of collagen. UVA destroys Vitamin A, which makes Serum C a perfect product to use after sunbathing.

B6 regulates facial oil production. Therefore, Serum C is also suitable for people with oily skin and mild acne.

Polyphenols are antioxidants that not only protects cells, but also improves skin microcirculation and works anti-inflammatory.

### Directions for use:

Serum C is easily absorbed by the skin, and is used at night time. Suitable for all skin types.

Serum C is applied as the layer closest to the skin when additional products are used. Preferable product to use is Night Cream where a synergetic effect is achieved because of the AHA.

Serum C is also available as a salon regimen, where the active ingredients are of higher concentration.

People suffering from citrus allergies may be sensitive to Serum C.

Self-preserving system.



*Ingredients: Aqua Purificata/Water, Citrus Sinensis (Orange) Fruit Extract, Glycerin (Vegetable), Sodium Levulinate, Sodium Anisate, Biosaccharide Gum-4, Biosaccharide gum-2, Xanthan Gum, Citrus Limon (Lemon) Peel Oil, Rosmarinus Officinalis (Rosemary) Leaf Extract, Limonene\*, Citral\*. \*From the essential oils.*

## Serum Moist

- Moisturising serum
- Suitable for all skin types
- Easily absorbed

Serum Moist has a high content of moisturising ingredients from beet, apple and grape. The product is suitable for all skin types. It is easily absorbed by the skin and is used alone or under any of our facial creams.

### Directions for use:

Apply Serum Moist to cleansed skin, then apply a facial oil or cream, 1-2 times per day for best result.

To achieve the absolute best result, apply Serum Moist after an exfoliation with AHA & Jojoba Peeling or AHA 10%.

Serum Moist should be sluiced into the skin and/or applied before massage and nourishing mask (not cleansing masks such as Face Mask Clearing or Face Mask Gentle).

Self-preserving system.



*Ingredients: Aqua Purificata/Water, Xylitylglucoside, Anhydroxylitol, Xylitol, Sodium Anisate, Sodium Levulinate, Glycerine (Vegetable), Biosaccharide Gum-4, Biosaccharide Gum-2, Xanthan Gum, Citrus Aurantium (Bitter Orange) Flower Oil, Sodium Chloride, Helianthus Annuus (Sunflower) Seed Oil, Rosmarinus Officinalis (Rosemary) Leaf Oil.*

## Serum Clearing

- Cleansing and balancing
- Suitable for oily, blemished and acne skin
- Spot treat acne
- Can be applied several times a day

Serum Clearing is a balancing and moisturising serum for acne treatment.

Serum Clearing contains a special Lactic Acid which is efficient against bacteria and fungus.

Peppermint soothes itching.

Lavender is calming.

Juniper is purifying.

Geranium is healing.

### **Directions for use:**

Apply Serum Clearing to cleansed skin, then apply a facial oil or cream, 1-2 times per day for best result.

To achieve the absolute best result, apply Serum Clearing after an exfoliation with AHA & Jojoba Peeling or AHA 10%.

Serum Clearing should be sluiced into the skin and/or applied before massage and nourishing mask (not cleansing masks such as Face Mask Clearing or Face Mask Gentle).

Self-preserving system.

*Ingredients: Aqua Purificata/Water, Sodium Caprinoyl/Lauroyl Lactylate, Caprylyl/Capryl Wheat Bran/Straw Glycosides, Fusel Wheat Bran/Straw Glucosides, Polyglyceryl-5 Oleate, Sodium Cocoyl Glutamate, Glyceryl Caprylate, Xanthan Gum, Lavandula Officinalis (Lavender) Oil, Pelargonium Graveolens (Rose Geranium) Flower Oil, Juniperus Communis (Juniper) Oil, Mentha Piperita (Peppermint) Oil.*





## Aloe Vera Barbadensis

- Gel for all skin types
- After-sun product that has a cooling effect on the skin

Aloe Vera Barbadensis is used in cases of mild sunburn and itching caused by insect bites. Cooling and moisturising. The Aloe Vera plant has thick, rubbery leaves. When preparing our Aloe Vera, only the inner leaf is used.

Our Aloe Vera is 98.5% pure Aloe Vera Barbadensis.

Aloe Vera Barbadensis is considered the most active of all kinds of Aloe, and has many uses. Aloe Vera Barbadensis contains lots of active ingredients, minerals, amino acids and vitamins.

Our growers of Aloe Vera are approved by the IASC (International Aloe Science Council), which guarantees effective Aloe Vera of the highest quality.

### Directions for use:

Apply alone or under a cream from our product line. Perfect all over both face and body after sunbathing. The plant juice has firming effects when it dries. After applying the Aloe Vera, apply a body lotion and suitable facial products.

Aloe Vera can be used as a night cream for oily skin.

Can also be used as a refreshing leave-on facial mask or aftershave. For all skin types.

**Burns:** Used in hospitals in England to relieve burns. As always when it comes to burns, time is crucial. The earlier the treatment is started, the better result.

**Problematic skin - eczema care:** Gives a cooling effect and makes the skin smooth. Can be used on damaged skin.

**Psoriasis:** Mix Aloe Vera Barbadensis with body lotion for an extra moisture addition.

**Soothes itching:** Apply to skin stricken with chicken pox.

A product for your family's medicine cabinet.

Self-preserving system.



*Ingredients: Aqua Purificata/Water, Xanthan Gum, Aloe Barbadensis Leaf Juice Powder, Sodium PCA, Glyceryl Caprylate, Levulinic Acid, Ascorbic Acid, Sodium Levulinate, Glycerine (Vegetable).*

## Coldpressed Jojoba Oil

- Suitable for all skin types
- Basic oil and universal product for the whole family

Our Jojoba Oil is light in texture and of unique quality. It is produced by gentle cold pressing the seeds from the Jojoba bush. The particular composition of fatty acids in the oil makes it easily absorbed into the skin and increases the skin's protective barrier. The oil is very sustainable, preservatives are not needed.

**A facial oil for all skin types:** Use alone or under any of the facial creams in our product line. The consistency of the oil is relatively thin and is quickly absorbed by the skin without smudging.

**Dry skin:** If your skin is really dry and absorbs the oil quickly, it is important to keep replenishing the skin. By reapplying oil to the dry skin, it will improve its ability to regenerate. When the skin is in balance, the oil is very economical.

**Dry hair:** Make a deep treatment with Coldpressed Jojoba Oil. If your hair is very dry, apply oil to the tips after washing.

**Makeup remover:** To remove waterproof mascara, apply oil on a moist cotton round and rub over the eye.

**Waterresistant hand cream:** Protects hands for several hours against dryness caused by repeated exposure to water.

**Baby care:** The oil is lighter than Baby Oil in consistency. Apply a thin layer onto the skin at least twice daily.

**Sore nipples:** Jojoba Oil is tasteless and harmless if ingested. Does not need to be washed off before breastfeeding.

**Candida (yeast infection):** Apply the oil at least twice a day. Keep treating the area at least one day after the symptoms have disappeared.

**Shaving:** The oil is antibacterial and helps prevent red spots.

**Impure skin:** Jojoba Oil is balancing to all skin types.

A perfect oil for treating the whole family's skin care needs. Protects against cold weather. Can be used on damaged skin. The oil will prevent the skin from forming a scab.

Self-preserving system.



*Ingredients: Simmondsia Chinensis (Jojoba) Seed Oil.*

## Royal Facial Oil GLA

- A smoothing facial oil
- Suitable for all skin types
- Protects the skin against cold weather

Royal Facial Oil GLA is a smoothing facial oil consisting of Borage Oil, Jojoba Oil and Rosehip Seed Oil, which increases the elasticity and moisture content of the skin. It provides a smoothing effect which is mostly noticeable on a mature or dry skin, but benefits all.

Royal Facial Oil GLA is free from essential oils.

Borage Oil provides the skin with essential fatty acids GLA (Gamma Linolenic Acid) and Linoleic Acid, which strengthens the skin barrier in those who suffer from eczema.

Rosehip Seed Oil comes from the rosehip seed. The oil contains Vitamin A. It helps renew the skin and age spots, wrinkles and scars will be less noticeable. Rosehip Seed Oil is also firming to the skin.

### Directions for use:

Royal Facial Oil GLA is used alone or under any of the facial creams in our product range. The consistency of the oil is relatively thin and is quickly absorbed by the skin without smudging (unless products with a mineral oil base have previously been used).

If your skin is really dry and absorbs the oil quickly, it is important to keep replenishing the skin. By reapplying oil to the dry skin, it will improve its ability to regenerate.

Do not forget to apply to the delicate skin on your neck.

Royal Facial Oil GLA is a perfect oil for facial massage and facilitates pore extraction.

Some people can be sensitive to Borage Oil. But, do not confuse sensitivity with the increased blood circulation and better luster of the skin that takes place when any vegetable oil is applied to the skin. This can cause an itchy feeling, but is totally normal.

If you are sensitive and show a reaction to the oil, rinse off with cold water. Instead, use Coldpressed Jojoba Oil.

Self-preserving system.



*Ingredients: Simmondsia Chinensis (Jojoba) Seed Oil, Helianthus Annuus (Sunflower) Seed Oil, Caprylic/ Capric Triglyceride, Azadirachta Indica (Neem) Leaf Extract, Borago Officinalis Seed Oil, Rosa Canina (Dog Rose) Fruit Oil, Rosmarinus Officinalis (Rosemary) Leaf Oil, Tocopheryl Acetate.*

## Royal Facial Oil Gentle

- Facial oil for dry and sensitive skin
- Soothing, smoothing and strengthening

Royal Facial Oil Gentle is a nourishing facial oil for dry and sensitive skin. Essential oils from Orange, Lavender, Bitter Orange Flowers (Neroli), and Olibanum work together to protect the skin when changing weather conditions, which forces the skin to adapt to different levels of moisture in the air.

The content of pure plant oils and vitamins work together to increase the elasticity and moisture content of the skin. This provides a smoothing effect which is mostly noticeable on a mature or dry skin, but benefits all.

Borage Oil contains 20% GLA (Gamma Linolenic Acid) which the body can convert into prostaglandins, which can help to preserve the skin.

Orange Oil is antiseptic, stimulates both the lymphatic system and blood circulation while giving a calming effect to the skin.

Lavender Oil stimulates cell regeneration, acts balancing, purifying and soothing.

Neroli, from the flowers of the bitter orange tree, soothes and calms the skin, stimulates cell renewal and prevents broken capillaries.

Frankincense Oil (Olibanum Oil) from boswellia trees, strengthens the veins and prevents wrinkles.

### Directions for use:

Royal Facial Oil Gentle is used alone or under any of the facial creams in our product line. It is quickly absorbed by the skin without smudging (unless products with a mineral oil base have previously been used).

Royal Facial Oil Gentle is a perfect oil for facial massage and facilitates pore cleansing.

A few people can be sensitive to Borage Oil. But, do not confuse sensitivity with the increased blood circulation and better luster of the skin that takes place when any vegetable oil is applied to the skin. This can cause an itchy feeling, but is totally normal.

If you are sensitive and show a reaction to the oil, rinse off with cold water. Instead, use Coldpressed Jojoba Oil.

Self-preserving system.

*Ingredients: Simmondsia Chinensis (Jojoba) Seed Oil, Helianthus Annuus (Sun Flower) Seed Oil, Caprylic/Capric Triglyceride, Borago Officinalis Seed Oil, Rosa Canina Dog Rose) Fruit Oil, Azadirachta Indica (Neem) Leaf Extract, Citrus Sinensis (Sweet Orange) Peel Oil, Lavandula Angustifolia (Lavender) Oil, Citrus Aurantium (Bitter Orange) Flower Oil, Citrus Aurantium (Bitter Orange) Leaf/Twig Oil, Rosmarinus Officinalis (Rosemary) Leaf Oil, Olibanum, Tocopheryl Acetate, Linalool\*, Limonene\*, Geraniol\*, Farnesol\*. \*From the essential oils.*



## Royal Facial Oil Supplement

- Revitalizing and smoothing facial oil
- For dry and/or mature skin

Royal Facial Oil Supplement is a facial oil with essential oils of Mandarin, Lavender, Neroli and Rosemary and is activating and revitalizing. Stimulates tired and dull skin. Suitable for dry and mature skin.

The content of pure plant oils and vitamins work together to increase the elasticity and moisture content of the skin. This provides a smoothing effect which is mostly noticeable on a mature or dry skin.

Borage Oil contains 20% GLA (Gamma Linolenic Acid) which the body can convert into prostaglandins, which can help to preserve the skin.

Mandarin Oil is strengthening and helps prevent stretch marks.

Lavender Oil stimulates cell regeneration, acts balancing, purifying and soothing.

Neroli, from the flowers of the bitter orange tree, soothes and calms the skin, stimulates cell renewal and prevents broken capillaries.

Rosemary Oil increases blood circulation.

Rosemary antioxidants are used instead of synthetic antioxidants (BHA, BHT), which are toxic to water organisms.

### Directions for use:

Royal Facial Oil Supplement is used alone or under any of the facial creams in our product line. It is quickly absorbed by the skin without smudging (unless products with a mineral oil base have previously been used).

Royal Facial Oil Supplement is a perfect oil for facial massage and facilitates pore cleansing.

Royal Facial Oil Supplement should not be used if you have sensitive skin, rosacea or acne. The oil is too active.

A few people can be sensitive to Borage Oil. But, do not confuse sensitivity with the increased blood circulation and better luster of the skin that takes place when any vegetable oil is applied to the skin. This can cause an itchy feeling, but is totally normal.

If you are sensitive and show a reaction to the oil, rinse off with cold water. Instead, use Coldpressed Jojoba Oil. Not recommended for people with citrus allergies.

Self-preserving system.

*Ingredients: Simmondsia Chinensis (Jojoba) Seed Oil, Helianthus Annuus (Sunflower) Seed Oil, Azadirachta Indica (Neem) Leaf Extract, Borago Officinalis Seed Oil, Rosa Canina (Dog Rose) Fruit Oil, Citrus Reticulata (Mandarin*



*Orange) Peel Oil, Lavandula Angustifolia (Lavender) Oil, Citrus Aurantium (Bitter Orange) Flower Oil, Rosmarinus Officinalis (Rosemary) Leaf Oil, Tocopheryl Acetate, Linalool\*, Limonene\*, Geraniol\*, Farnesol\*.*

*\*From the essential oils.*

## Royal Facial Oil Clearing

- Facial oil for oily and blemished skin
- Improves circulation and cleans out toxins
- Purifying and balancing

Royal Facial Oil Clearing with essential oils from Lemon, Bergamot, Lavender and Bitter Orange (Petitgrain) work together to purify and balance the skin. Suitable for oily and blemished skin, even sensitive.

The content of pure plant oils and vitamins work together to increase the elasticity and moisture content of the skin. This provides a smoothing effect which is mostly noticeable on a mature or dry skin.

Borage Oil contains 20% GLA (Gamma Linolenic Acid) which the body can convert into prostaglandins, which can help to preserve the skin.

Petitgrain (Bitter Orange Leaf Oil) is a cleansing and antiseptic oil.

Cold pressed Lemon Oil is purifying, antiseptic and astringent.

Lavender Oil stimulates cell regeneration, acts balancing, purifying and soothing.

Bergamot Oil is balancing and cleansing.

Rosemary antioxidants are used instead of synthetic antioxidants (BHA and BHT), which are toxic to water organisms.

Royal Facial Oil Clearing protects the skin when changing weather conditions, which forces the skin to adapt to different levels of moisture in the air.

### Directions for use:

Royal Facial Oil Clearing is used alone or under any of the facial creams in our product line. It is quickly absorbed by the skin without smudging (unless products with a mineral oil base have previously been used).

Royal Facial Oil Clearing is a perfect oil for facial massage and facilitates pore extraction.

Some people can be sensitive to Borage Oil. But, do not confuse sensitivity with the increased blood circulation and better luster of the skin that takes place when any vegetable oil is applied to the skin. This can cause an itchy feeling, but is totally normal.

If you are sensitive and show a reaction to the oil, rinse off with cold water. Instead, use Coldpressed Jojoba Oil.



Self-preserving system.

*Ingredients: Simmondsia Chinensis (Jojoba) Seed Oil, Helianthus Annuus (Sunflower) Seed Oil, Azadirachta Indica (Neem) Leaf Extract, Borago Officinalis Seed Oil, Rosa Canina (Dog Rose) Fruit Oil, Citrus Limon (Lemon) Peel Oil, Citrus Bergamia (Bergamot Orange) Leaf Oil, Lavandula Angustifolia (Lavender) Oil, Citrus Aurantium (Bitter Orange) Leaf/Twig Oil, Rosmarinus Officinalis (Rosemary) Leaf Oil, Tocopheryl Acetate, Geraniol\*, Limonene\*, Linalool\*, Citral\*, Citronellol\*. \*From the essential oils.*

## Royal Facial Oil Moist

- Smoothing facial oil
- Balancing for all skin types
- Retains moisture content of the skin

Royal Facial Oil Moist with Neroli is a balancing, smoothing and moisturising facial oil that increases the cells' oxygen intake and resilience.

The content of pure plant oils and vitamins work together to increase the elasticity and moisture content of the skin. This provides a smoothing effect which is mostly noticeable on a mature or dry skin.

Royal Facial Oil Moist protects the skin when changing weather conditions, which forces the skin to adapt to different levels of moisture in the air.

Neroli, from the flowers of the bitter orange tree, soothes and calms the skin, stimulates cell renewal and prevents broken capillaries.

Borage Oil contains 20% GLA (Gamma Linolenic Acid) which the body can convert into prostaglandins, which can help to preserve the skin.

Rosemary antioxidants are used instead of synthetic antioxidants (BHA And BHT), which are toxic to water organisms.

### Directions for use:

Royal Facial Oil Moist is used alone or under any of the facial creams in our product line. It is quickly absorbed by the skin without smudging (unless products with a mineral oil base have previously been used).

Royal Facial Oil Moist is a perfect oil for facial massage and facilitates pore extraction.

Some people can be sensitive to Borage Oil. But, do not confuse sensitivity with the increased blood circulation and better luster of the skin that takes place when any vegetable oil is applied to the skin. This can cause an itchy feeling, but is totally normal.

If you are sensitive and show a reaction to the oil, rinse off with cold water. Instead, use Coldpressed Jojoba Oil.

Self-preserving system.

*Ingredients: Simmondsia Chinensis (Jojoba) Seed Oil, Helianthus Annuus (Sunflower) Seed Oil, Azadirachta Indica*





*(Neem) Leaf Extract, Borago Officinalis Seed Oil, Rosa Canina (Dog Rose) Fruit Oil, Citrus Aurantium (Bitter Orange) Flower Oil, Rosmarinus Officinalis (Rosemary) Leaf Oil, Tocopheryl Acetate, Limonene\*, Linalool\*, Geraniol\*, Farnesol\*. \*From the essential oils.*

## Royal Facial Oil More

- Smoothing facial oil
- Facial oil for mature and sensitive skin
- Suitable for rosacea and skin with superficial blood vessels

Royal Facial Oil More is a smoothing facial oil consisting of Borage Oil, Jojoba Oil and Rosehip Seed Oil, and essential oil of Rose Petals which increases the elasticity and moisture content of the skin. This provides a smoothing effect which is mostly noticeable on a mature or dry skin. The same base as GLA.

Royal Facial Oil More protects the skin when changing weather conditions, which forces the skin to adapt to different levels of moisture in the air.

Borage Oil provides the skin with essential fatty acids GLA (Gamma Linolenic Acid) and Linoleic Acid, which strengthens the skin barrier in those who suffer from eczema.

Rosehip Seed Oil comes from the rosehip rose seed. The oil contains vitamin A. It helps renew the skin and age spots, wrinkles and scars will be less noticeable. Rosehip Seed Oil is also firming to the skin.

Rose Otto Oil, distilled from rose petals, is regenerating and increases the moisture content of the skin.

Rosemary antioxidants are used instead of synthetic antioxidants (BHA and BHT), which are toxic to water organisms.

### Directions for use:

Royal Facial Oil More is used alone or under any of the facial creams in our product line. It is quickly absorbed by the skin without smudging (unless products with a mineral oil base have previously been used).

Royal Facial Oil More is a perfect oil for facial massage and facilitates pore cleansing.

A few people can be sensitive to Borage Oil. But, do not confuse sensitivity with the increased blood circulation and better luster of the skin that takes place when any vegetable oil is applied to the skin. This can cause an itchy feeling, but is totally normal.

If you are sensitive and show a reaction to the oil, rinse off with cold water. Instead, use Coldpressed Jojoba Oil.





Self-preserving system.

*Ingredients: Simmondsia Chinensis (Jojoba) Seed Oil, Helianthus Annuus (Sunflower) Seed Oil, Azadirachta Indica (Neem) Extract, Borago Officinalis Seed Oil, Rosa Canina (Dog Rose) Fruit Oil, Rosa Damascena (Damasc Rose) Flower Oil, Rosmarinus Officinalis (Rosemary) Leaf Oil, Tocopheryl Acetate, Linalool\*, Citral\*, Citronellol\*, Geraniol\*, Eugenol\*. \*From the essential oils.*

## Eye Cream

- Moisturising eye cream
- Facial cream for those who are allergic to essential oils

Eye Cream is an eye cream with Rosehip Seed Oil in combination with Shea Butter, Jojoba Oil, various herbal salts and Vitamin C which increases the moisture content of the skin. The result is a smoother skin. Extracts from Horse Chestnut fruit helps soften the appearance of dark circles.

Rosehip Seed Oil in Eye Cream comes from rose bushes. It contains Vitamin A which helps renew the skin and age spots, wrinkles and scars will be less noticeable. Rosehip seed oil is also firming to the skin.

Eye Cream can be used as a facial cream for those who are allergic to essential oils. Also suitable for neck, décolletage and at the base of the nose where the skin can be very delicate.

### Directions for use:

Remove eye makeup carefully before Eye Cream is applied. Remember to always use makeup that is water soluble, otherwise the cleansing can be stressful for the delicate skin around the eyes.

Eye Cream is applied to the outer corner, then under and around the eye. Do not use more Eye Cream than what is instantly absorbed.

Use Eye Cream during the day and/or at night. Use from teenage years (when you begin to use makeup) and onward. It is never too early to start using eye cream.

Self-preserving system.



*Ingredients: Aqua Purificata/Water, Rosa Canina (Rose Hip) Fruit Oil, Glycerin (Vegetable), Cetearyl Alcohol, Coco Glucoside, Butyrospermum Parkii (Shea) Butter, Sodium PCA, Simmondsia Chinensis (Jojoba) Seed Oil, Levulinic Acid, Glyceryl Caprylate, Lactic Acid, Tocopherol, Tocopheryl Acetate, Xanthan Gum, Aesculus Hippocastanu (Horse chestnut)), Citrus Aurantius Dulcis (Orange) Fruit Extract, Rosmarinus Officinalis (Rosemary) Leaf Extract.*

## Eye Cream More

- Smoothing and firming
- Acts lifting on heavy and droopy eyelids
- Instant results

Eye Cream More with Rosehip Seed Oil, Sea Buckthorn Oil and extracts from the Persian Silk Tree provides a smoothing and firming effect on the skin around the eyes. Eye Cream More has a draining effect on swelling and prevents dark circles around the eyes.

In combination with Shea Butter, Jojoba Oil and different herbal salts, it increases the moisture content of the skin, resulting in a smoothing effect.

Sea Buckthorn Oil is rich in antioxidants, fatty acids and Vitamin C. Has beneficial properties to trouble with mucous membranes and skin damage. Clinical studies have proven Sea Buckthorn Oil to accelerate and promote healing of the skin, including burns and atopic dermatitis. The oil also increases cell renewal and treats dry mucous membranes.

Rosehip Seed Oil in Eye Cream More comes from rose bushes. It contains Vitamin A which helps renew the skin and age spots, wrinkles and scars will be less noticeable. Rosehip Seed Oil is also firming to the skin.

Extract from the Persian Silk Tree, which is extracted from the bark, has a firming effect on the skin. That is what gives Eye Cream More its amazing uplifting, smoothing and draining effect.

### Directions for use:

Remove eye makeup carefully before Eye Cream More is applied. Remember to always use makeup that is water soluble, otherwise the cleansing can be stressful for the delicate skin around the eyes.

Eye Cream More is applied to the outer corner, then under and around the eye. Do not use more Eye Cream More than what is instantly absorbed.

Use Eye Cream More during day and/or at night from about 40+, or when the skin around the eyes starts to droop.

Self-preserving system.



*Ingredients: Aqua Purificata/Water, Rosa Canina (Dog Rose) Fruit Oil, Cetearyl Alcohol, Glycerin (Vegetable), Butyrospermum Parkii (Shea) Butter, Coco-Glucoside, Simmondsia Chinensis (Jojoba) Seed Oil, Hippophae Rhamnoides Fruit Oil, Albizia Julibrissin (Mimosa) Bark Extract, Sodium PCA, Glyceryl Caprylate, Levulinic Acid, Lactic Acid, Sodium Levulinate, Xanthan Gum, Tocopheryl Acetate, Tocopherol, Esculin, Helianthus Annuus (Sunflower) Seed Oil, Citrus Aurantium (Bitter Orange) Fruit Extract, Rosmarinus Officinalis (Rosemary) Leaf Oil, Darutoside.*

## Eye Gel

- Cooling eye gel
- Prevents and reduces puffiness under the eyes
- Excellent as makeup base

Eye Gel is a cooling eye gel, containing active substances that prevents and reduces puffy eyes. Dipeptide-2 (from Japanese Sake Extract) improves lymphatic circulation and removes waste products.

Hesperidin Methyl Chalcone (from orange) is a flavonoid. This substance is an antioxidant that reduce capillary permeability and strengthens them, and makes them not leak into the surrounding tissue.

Palmitoyl Tetrapeptide-3 (from palmitic acid) increases the skin's firmness, elasticity and reduces the risk of inflammation.

Carrot Seed Oil, along with Olibanum Oil, tightens and increases elasticity.

Neroli soothes the delicate skin around the eyes.

### Directions for use:

Eye Gel is absorbed easily by the skin and is suitable for all skin types. Can be used during both day and night. Although, if Eye Gel is used, it is important to add moisture by using Eye Cream or Eye Cream More once a day.

Works great as makeup base.

Facial: At the salon, it is suitable to use Eye Gel as an eye mask. Apply Eye Gel on the entire eye area but avoid the area closest to the lashes. Add cold compresses onto the eyes, and let sit while the face mask is on, or at least for five minutes.

Self-preserving system.

*Ingredients: Aqua Purificata/Water, Albizia Julibrissin (Mimosa) Bark Extract, Darutoside, Xanthan Gum, Undecylenoyl Glycine, Capryloyl Glycine, Glycerin (Vegetable), Sodium Lactate, Aloe Barbadensis Leaf Juice Powder, Olibanum, Citrus Aurantium (Bitter Orange) Flower Oil, Daucus Carota Sativus (Carrot) Seed Oil, Helianthus Annuus (Sunflower) Seed Oil, Rosmarinus Officinalis (Rosemary) Leaf Oil, Limonene\*, Linalool.*  
*\*From the essential oils*



## Eye Balm

- Smoothing eye balm
- Best suited for dry skin
- Not to be used by people who easily get puffy eyes

Eye Balm has a rich composition of plant oils and essential oils that are nourishing and revitalising. Oils from Rosehip Seed, Borage, Jojoba, Squalane and Peptides increases the moisture content of the skin and improves resilience.

Carrot Seed Oil together with Olibanum Oil tightens and increases elasticity.

Carrot Seed Oil is antiseptic and heals small cuts.

Neroli soothes the delicate skin around the eyes.

The peptides are extracted from different vegetable oils and are moisture-binding and has a stimulating activity comparable to Vitamin A/Retinol. They stimulate the regeneration of collagen and glycosaminoglycans (includes hyaluronic acid). They also protect and repair the collagen like retinol, but without the risk of irritating/ dehydrating the skin. The effect will be a reduction of wrinkles' depth and length, as well as reduction of fine lines.

The skin becomes firmer and smoother, and the elasticity and moisture balance is improved.

### Directions for use:

Eye Balm is very economical. Take a small amount and warm between your fingers. Dab sparingly on the hard part around the eye.

Although Eye Balm is used, it is important to use Eye Cream or Eye Cream More once a day.

Other good uses are:

At the root of the nose if you have sensitive skin or a tendency for eczema.

On the upper lip if it starts to become dry and wrinkled. A phenomenon that affects smokers.

Self-preserving system.



*Ingredients: Simmondsia Chinensis (Jojoba) Seed Oil, Cera Alba (Beeswax), Squalane, Caprylic/Capric Triglyceride, Ethylhexyl Palmitate, Butyrospermum Parkii (Shea) Butter, Persea Gratissima (Avocado) Oil, Phytosterols, Tribehenin, Borago Officinalis Seed Oil, Rosa Canina (Dog Rose) Fruit Oil, Olea Europaea (Olive) Fruit Oil, Sorbitan Isostearate, Olibanum, Citrus Aurantium Amara (Bitter Orange) Flower Oil, Daucus Carota Sativus (Carrot) Seed Oil, Sorbitan Oleate, Lactic Acid, Helianthus Annuus (Sunflower) Seed Oil, Rosmarinus Officinalis (Rosemary) Leaf Oil, Ascorbyl Palmitate, Tocopheryl Acetate, Palmitoyl Oligopeptide, Limonene\*, Linalool\*, Geraniol\*.*

*\*From the essential oils.*

## Face Lotion Moist

- Facial cream for normal to dry skin
- Perfect as the first facial cream to use as teenager

Face Lotion Moist is a light cream that adds a lot of moisture and is suitable for both day and night time. The cream includes essential oils from Bergamot and Patchouli.

Bergamot Oil is antiseptic and can relieve eczema.

Patchouli Oil is strengthening and regenerating.

The Lactic Acid used comes from sugar-beet, and is of the same type that occurs naturally in our body and binds moisture.

### Directions for use:

Distribute a small amount of Face Lotion Moist on your hands and apply directly after Freshener, on moist skin.

Face Lotion Moist provides the skin with moisture and nourishment.

Face Lotion Moist should not be used around the eyes.

Use a suitable product around the eyes: Eye Cream, Eye Cream More, Eye Balm or Eye Gel.

Apply Coldpressed Jojoba Oil or Royal Facial Oil Moist to the skin prior to Face Lotion Moist to further enhance the effect on dry skin.

Self-preserving system.

*Ingredients: Aqua Purificata/Water, Simmondsia Chinensis (Jojoba) Seed Oil, Cetearyl Alcohol, Glycerin (Vegetable), Caprylic/Capric Triglyceride, Butyrospermum Parkii Butter, Cetearyl Glucoside, Cera Alba (Beeswax), Lactic Acid, Sodium Lactate, Glyceryl Caprylat, Levulinic Acid, Sodium Levulinate, Citrus Bergamia Melarosa (Bergamot) Leaf Oil, Xanthan Gum, Pogostemon Cablin (Patchouli) Oil, Citrus Aurantium Dulcis (Orange) Fruit Extract, Rosmarinus Officinalis (Rosemary) Leaf Extract, Helianthus Annuus (Sunflower) Seed Oil, Pelargonium Graveolens (Geranium) Flower Oil, Limonene\*, Linalool\*, Citral\*. \*From the essential oils.*



## Face Lotion Clearing

- Facial Cream for normal to oily skin
- Balancing (not dehydrating)
- Reduces the appearance of large pores

Face Lotion Clearing with essential oils of Bergamot and Margosa (Neem) is a moisturising lotion for normal to oily skin. It balances the skin (does not dehydrate) and is therefore a good product to start with when switching from mineral oil based to vegetable oil based skin care. Reduces the appearance of large pores.

Margosa Oil (Neem) leaves the skin refreshed and over time less shiny. Margosa (Neem) is one of India's most commonly occurring trees. It has antiseptic and strengthening properties, which, among other things, minimizes pores.

The Lactic Acid used is made of sugar-beet, and is of the same type that occurs naturally in our body and binds moisture.

Bergamot Oil is extracted from the shell of a citrus fruit (bergamot orange) from Madagascar. Bergamot Oil is balancing and cleansing. The oil used is free from bergapten, which can make the skin sensitive to light.

### Directions for use:

Apply Face Lotion Clearing directly after Freshener, on moist skin.

Face Lotion Clearing should not be used around the eyes.

Use a suitable product around the eyes: Eye Cream, Eye Cream More, Eye Balm or Eye Gel.

Use Royal Facial Oil Clearing underneath Face Lotion Clearing to further enhance the effect on oily/blemished skin.

Self-preserving system.

*Ingredients: Aqua Purificata/Water, Cetearyl Alcohol, Glycerin (Vegetable), Simmondsia Chinensis (Jojoba) Seed Oil, Cera Alba (Beeswax), Coco Glucoside, Rosa Canina (Rose Hip) Fruit Oil, Aloe Barbadensis Leaf Juice Powder, Sodium PCA, Melia Azadirachta (Neem) Leaf Extract, Lactic Acid, Glyceryl Caprylat, Levulinic Acid, Sodium Levulinate, Caprylic/Capric Triglyceride, Tocopheryl Acetate, Helianthus Annuus (Sunflower) Seed Oil, Rosmarinus Officinalis (Rosemary) Leaf Oil, Citrus Bergamia Melarosa (Bergamot) Leaf Oil, Limonene\*, Linalool\*. \*From the essential oils.*



## Face Lotion More

- Anti-aging cream for mature skin, also suitable for sensitive skin
- Restores skin elasticity and resilience

Face Lotion More is a moisturising lotion for mature skin with extracts of Red Clover and essential oils of Rose, Patchouli and Bergamot, that restores the skin's elasticity and resilience.

There are isoflavones in Red Clover that restores the elasticity, resilience and the moisture content in ageing skin. Studies have shown that when red clover extract is used on the skin, it stimulates cell regeneration. The skin becomes healthier and smoother.

Borage Oil, Rosehip Seed Oil and essential oils of Rose Otto, Patchouli and Bergamot enhances the regenerating effect.

Borage Oil increases the cells' oxygen uptake and resistance, which prevents the skin from dehydrating.

Rosehip Seed Oil helps the skin regenerate.

Patchouli Oil is extracted from dried leaves from the Patchouli plant, a shrub that grows in India, China and Indonesia. The oil has an exotic, oriental fragrance and stimulates cell division.

Bergamot Oil is extracted from the shell of a citrus fruit (Bergamot Orange) from Madagascar. Bergamot Oil is balancing and cleansing. The oil used is free from bergapten, which can make the skin sensitive to light.

Rose Otto Oil is distilled from rose petals, is regenerating and increases the moisture content of the skin.

Suitable for skin at 40+.

### Directions for use:

Apply Face Lotion More directly after Freshener, on moist skin. Suitable for both day and night time.

Use Royal Facial Oil More underneath Face Lotion More to further enhance the effect on dry skin.

Extract from Red Clover makes the colour of the cream a bit darker.

Use a suitable product around the eyes: Eye Cream, Eye Cream More, Eye Balm or Eye Gel.

Self-preserving system.

*Ingredients: Aqua Purificata/Water, Caprylic/Capric Triglyceride, Cetearyl Alcohol, Cetearyl Glucoside, Olea Europaea (Olive) Fruit Oil, Simmondsia Chinensis (Jojoba) Seed Oil, Cera Alba (Beeswax), Rosa Canina (Rose Hip) Fruit Oil, Borago Officinalis (Borage) Seed Oil, Azadirachta Indica (Neem) Leaf Extract, Glycerin (Vegetable), Sodium Levulinate, Sodium Anisate, Xanthan Gum, Trifolium Pratense (Red Clover) Extract, Citrus Bergamia (Bergamot) Oil, Lactic Acid, Rosa Damascena (Rose) Flower Oil, Rosmarinus Officinalis (Rosemary) Leaf Oil, Pogostemon Cablin (Patchouli) Oil, Helianthus Annuus (Sunflower) Seed Oil, Daucus Carrota (Carrot) Root Extract, Limonene\*, Linalool\*, Geraniol\*, Citronellol\*, Citral\*, Eugenol\*. \*From the essential oils.*





## Face Lotion Supplement

- Smoothing anti-aging cream for mature skin
- Suitable for matte, dull skin and skin with enlarged pores
- Not suitable for sensitive or oily skin (too active)

Face Lotion Supplement is a luxurious smoothing anti-aging cream with Pomegranate and Peptides.

Pomegranate improves elasticity, reduces wrinkles and delays aging.

Oils from Rapeseed and Jojoba, together with Peptides, increase the moisture content of the skin and improve resilience.

Carrot Seed Oil and Olibanum are firming and improves elasticity.

Neroli Oil balances and calms the skin.

Peptides are extracted from different vegetable oils and has a stimulating activity comparable to Vitamin A/Retinol. Peptides stimulates the formation of new collagen and glycosaminoglycans (includes hyaluronic acid). They also protect and repair the collagen like retinol, but without the risk of irritating/ dehydrating the skin.

The effect is a reduction of wrinkle depth and length, as well as reduction of fine lines. The skin becomes firmer and smoother, and the elasticity and moisture balance is improved.

### Directions for use:

Face Lotion Supplement is applied after Freshener, on moist skin. When using serum and oil, apply them before day cream/night cream.

Use a suitable product around the eyes: Eye Cream, Eye Cream More, Eye Balm or Eye Gel.

Use Royal Facial Oil Supplement underneath Face Lotion Supplement to further enhance the effect on matte and dull skin.

Self-preserving system.

*Ingredients: Aqua Purificata/Water, Brassica Napus (Rape) Seed Oil, Xanthan Gum, Simmondsia Chinensis (Jojoba) Seed Oil, Cetearyl Alcohol, Butyrospermum Parki (Shea) Butter, Cera Alba (Beeswax), Coco-Glucoside, Sodium PCA, Ethylhexyl Palmitate, Glyceryl Caprylate, Tocopherol, Tocopheryl Acetate, Tribehenin, Punica Granatum Seed Oil, Levulinic Acid, Lactic Acid, Sodium Levulinate, Glycerin (Vegetable), Sodium Lactate, Citrus Aurantium (Bitter Orange) Flower Oil, Daucus Carota Sativus (Carrot) Seed Oil, Olibanum, Sorbitan Isostearate, Helianthus Annuus (Sunflower) Seed Oil, Rosmarinus Officinalis (Rosemary) Leaf Oil, Palmitoyl Oligopeptide, Limonene\*, Linalool\*, Geraniol\*. \*From the essentials oils.*



## Face Protection

- Protective moisturiser for sensitive skin
- Increases the skin's resilience

Face Protection with essential oil from Lavender and extracts from Chamomile, is a gentle and soothing lotion for dry and sensitive skin. Soothes and calms red flushed skin.

Face Protection provides both oil and moisture, whilst protecting your skin from external impact. The composition of ingredients makes Face Protection a cream with soothing and anti-inflammatory properties. Chamomile and Lavender are medicinal herbs that have been used for centuries and give the cream its mild fragrance.

Jojoba Oil is one of the major ingredients, and has a unique composition of fatty acids that bind skin moisture and increases the skin's protective barrier.

Beeswax and Shea Butter are solid vegetable fats which act protective, emollient and soothing on irritated skin.

The Beeswax used comes from Swedish farms, it contains propolis and is antiseptic.

Shea Butter protects the skin from dehydration, which is beneficial to prevent eczema and stretch marks.

Squalene, from olive oil, increases cell division and is moisturising and balancing.

### Directions for use:

Apply Face Protection after Freshener, on moist skin.

Face Protection is suitable for both day and night time.

Use a suitable product around the eyes: Eye Cream, Eye Cream More, Eye Balm or Eye Gel.

Use Royal Facial Oil Gentle or Royal Facial Oil Moist underneath Face Protection to further enhance the effect on dry and sensitive skin.

Self-preserving system.

*Ingredients: Aqua Purificata/Water, Squalane, Simmondsia Chinensis (Jojoba) Seed Oil, Brassica Napus (Rape) Seed Oil, Cera Flava (Beeswax), Cetearyl Alcohol, Cetearyl Glucoside, Sodium PCA, Butyrospermum Parkii (Shea) Butter, Glycerin (Vegetable), Sodium Levulinate, Sodium Anisate, Xanthan Gum, Chamomilla Recutita (Chamomile) Flower Oil, Lactic Acid, Lavandula Angustifolia (Lavender) Oil, Rosmarinus Officinalis (Rosemary) Leaf Extract, Linalool\*. \*From the essential oils.*



## Face Dream

- For very dry and sensitive skin
- Calms red, flushed skin
- Increases the skin's resilience

Face Dream with essential oil from Lavender and extract from Marigold is a mild lotion for dry skin that protects against external impact.

Face Dream is the oiliest facial cream in our product line, for very dry and sensitive skin.

Soothes and calms red flushed skin and increases the skin's resilience.

The composition of ingredients makes Face Dream a protective and nourishing cream.

Lavender and Geranium gives a mild scent.

### Directions for use:

Apply Face Dream after Freshener, on moist skin.

Face Dream is suitable for both day and night time.

Use a suitable product around the eyes: Eye Cream, Eye Cream More, Eye Balm or Eye Gel.

Use Royal Facial Oil Gentle or Royal Facial Oil Moist underneath Face Protection to further enhance the effect on very dry and sensitive skin.

Self-preserving system.



*Ingredients: Aqua Purificata/Water, Cetearyl Glucoside, Cetearyl Alcohol, Butyrospermum Parkii (Shea) Butter, Simmondsia Chinensis (Jojoba) Seed Oil, Persea Gratissima (Avocado), Phytosterols, Brassica Napus (Rape) Seed Oil, Ricinus Communis (Castor) Seed Oil, Sodium Levulinate, Sodium Anisate, Glycerin (Vegetable), Xanthan Gum, Lactic Acid, Calendula Officinalis (Marigold), Tocopherol, Tocopheryl Acetate, Mentha Piperita (Peppermint) Oil, Lavandula Angustifolia (Lavender) Oil, Pelargonium Graveolens (Geranium) Oil, Rosmarinus Officinalis (Rosemary) Leaf Oil, Geraniol\*, Citronellol\*, Limonene\*, Linalool\*, Citral\*. \*From the essential oils.*

## Night Cream

- Night cream for normal to dry skin
- Makes the skin sensitive to light, therefore used at night

Night Cream is a moisturising night cream for normal to dry skin. Makes the skin sensitive to light for a few hours and should therefore only be used at night.

The natural Lactic Acid (AHA) makes it easier for the skin to get rid of dead skin cells.

Rosehip Seed Oil in Night Cream comes from rose bushes. It contains Vitamin A which helps renew the skin and age spots, wrinkles and scars will be less noticeable. Rosehip Seed Oil is also firming to the skin.

The Squalene prepares the skin for the Vitamin A in the Rosehip Oil which is revitalising and treats dark spots.

### Directions for use:

Apply Night Cream after Freshener, on moist skin. When using a serum, apply this product prior to the Night Cream. Perfect to combine with Serum C that enhances the effect.

Use a suitable product around the eyes: Eye Cream, Eye Cream More, Eye Balm or Eye Gel.

Night Cream is primarily suitable for dry and mature skin. However, normal skin can benefit from using Night Cream during seasonal changes and/or when feeling dry.

Self-preserving system.



*Ingredients: Aqua Purificata/Water, Simmondsia Chinensis (Jojoba) Seed Oil, Squalane, Cetearyl Alcohol, Cetearyl Glucoside, Butyrospermum Parkii (Shea) Butter, Rosa Canina (Rose Hip) Fruit Oil, Lactic Acid, Sodium Lactate, Xanthan Gum, Glyceryl Caprylate, Levulenic Acid, Citrus Bergamia Melarosa (Bergamot) Leaf Oil, Pogostemon Cablin (Patchouli) Oil, Rosmarinus Officinalis (Rosemary) Leaf Extract, Limonene\*, Linalool\*.*

*\*From the essential oils.*

## Night Cream More

- Night cream for mature skin

Night Cream More is a nourishing night cream. The content of Rapeseed Oil and Buckthorn Oil gives a luxurios consistency and an reconstructive formula. Essential oils of Orange, Rose and Peppermint gives a fresh scent and a smooth result.

Conteracts visable signs of aging and moisturises dry skin.

Buckthorn Oil is rich in antioxidants, fatty acids and Vitamin-C, which is especially good for strengthening the skin's protective barrier during the night.

Orange Oil is antiseptic and stimulates the lymf- and blood circulation while having a calming effect on the skin.

Rose Oil/Rose Otto is an oil destillated from roses. It is regenerating and increases the moisturising effect. Rose Oil is calming, which makes the cream a good choice for mature skin that is also sensitive.

Peppermint is refreshing, cooling and antiseptic. Peppermint also enhances the properties of the Orange Oil and Rose Oil.

### Directions for use:

Apply Night Cream More after suitable cleansing, Freshener and Serum at night.

Use a suitable product around the eyes: Eye Cream, Eye Cream More, Eye Balm or Eye Gel.

Self-preserving system.



*Ingredients: Aqua Purificata/Water, Brassica Napus (Rape) Seed Oil, Ricinus Communis (Castor) Seed Oil, Cetearyl Alcohol, Glyceryl Stearate Citrate, Glyceryl Caprylate, Glycerin (Vegetable), Sodium Levulinate, Sodium Anisate, Butyrospermum Parkii (Shea) Butter, Simmondsia Chinensis (Jojoba) Seed Oil, Hippophae Rhamnoides (Sea Buckthorn) Oil, Lactic Acid, Xanthan Gum, Citrus Sinensis (Sweet Orange) Peel Oil, Mentha Piperita (Peppermint) Oil, Rosa Damascena (Rose) Oil, Rosmarinus Officinalis (Rosemary) Leaf Extract, Limonene\*, Linalool\*, Citral\*, Citronellol\*, Geraniol\*. \*From the essential oils.*

## Face Balm Clearing

- Purifying balm for mixed, oily and blemished skin
- Perfect for facial massage
- Provides good protection against cold and wind

Face Balm Clearing is a smooth balm that has a rich composition of plant oils and essential oils of Lemon, Bergamot, Lavender and Bitter Orange (Petitgrain) that act nourishing, cleansing and balancing. Face Balm Clearing is a balm suitable for mixed and oily skin.

Face Balm Clearing has a balancing effect on the skin, which makes the balm beneficial to use for people with oily skin but with a dry epidermis. The skin's own oil will then easier emerge on the surface and will not be encapsuled.

Cold pressed Lemon Oil is purifying, antiseptic and astringent.

Bergamot Oil is balancing and cleansing.

Lavender Oil stimulates cell regeneration, is balancing, purifying and soothing.

Bitter Orange (Petitgrain) is a cleansing and antiseptic oil.

Borage Oil increases the cells' oxygen absorption, resilience and prevents dry skin.

Rosehip Seed Oil helps skin regenerate.

The Squalene from Olive Oil increases cell division and is moisturising and balancing. It prepares the skin for the Vitamin A in the Rosehip Seed Oil which is revitalising and treats dark spots.

Face Balm Clearing can be used during both day and night depending on skin type and weather. The balm melts into the skin and increases the moisture content. Face Balm Clearing provides good protection against cold and wind and is therefore suitable during the winter months and can, when it is dry, be used as day cream.

### Directions for use:

Take a small amount of Face Balm Clearing and warm between the fingertips before applying to the face.

Use a suitable product around the eyes: Eye Cream, Eye Cream More, Eye Balm or Eye Gel.

Self-preserving system.

*Ingredients: Simmondsia Chinensis (Jojoba) Seed Oil, Cera Flava (Beeswax), Squalane, Caprylic/Capric Triglyceride, Persea Gratissima (Avocado) Oil, Phytosterols, Olea Europaea (Olive) Fruit Oil, Butyrospermum Parkii (Shea) Butter, Borago Officinalis (Borage) Seed Oil, Rosa Canina (Rose Hip) Fruit Oil, Citrus Limon (Lemon) Peel Oil, Citrus Bergamia Melarosa (Bergamot) Leaf Oil, Lavandula Angustifolia (Lavender) Oil, Citrus Aurantium (Petitgrain) Leaf Oil, Rosmarinus Officinalis (Rosemary) Leaf Extract, Geraniol\*, Limonene\*. \*From the essential oils.*



## Face Balm More

- Strengthening balm for all skin types
- Perfect for facial massage
- Provides good protection against cold and wind

Face Balm More is a smooth balm with a rich composition of plant oils that are nourishing and revitalising. Contains essential oils of Rose. Suitable for all skin types.

Rose Otto is an oil distilled from rose flowers. It is regenerating and increases the moisturising effect.

Borage Oil increases the cells' oxygen absorption, resilience and prevents dry skin.

Rosehip Seed Oil helps the skin rejuvenate.

The Squalene from Olive Oil increases cell division and is moisturising and balancing. It prepares the skin for the Vitamin A in the Rosehip Seed Oil which is revitalising and treats dark spots.

Face Balm More can be used during both day and night depending on skin type and weather. The balm melts into the skin and increases the moisture content. Face Balm More provides good protection against cold and wind and is therefore suitable to use during the winter months. It can, when the air is dry, be used as day cream.

### Directions for use:

Take a small amount of Face Balm More and warm between the fingertips before applying to the face.

Use a suitable product around the eyes: Eye Cream, Eye Cream More, Eye Balm or Eye Gel.

Self-preserving system.

*Ingredients: Simmondsia Chinensis (Jojoba) Seed Oil, Cera Flava (Beeswax), Squalane, Caprylic/Capric Triglyceride, Butyrospermum Parkii (Shea) Butter, Persea Gratissima (Avocado) Oil, Phytosterols, Borago Officinalis (Borage) Seed Oil, Rosa Canina (Rose Hip) Fruit Oil, Olea Europaea (Olive) Fruit Oil, Rosa Damascena (Rose) Flower Oil, Helianthus Annuus (Sunflower) Seed Oil, Rosmarinus Officinalis (Rosemary) Leaf Oil, Ascorbyl Palmitate, Tocopheryl Acetate, Linalool\*, Geraniol\*, Farnesol\*, Eugenol\*, Citronellol\*. \*From the essential oils.*



## Face Balm Moist

- Balancing balm for all skin types
- Perfect for facial massage
- Provides good protection against cold and wind

Face Balm Moist is a smooth balm with Neroli which calms and strengthens the skin. With a rich composition of plant oils and essential oils that work together, the balm is nourishing, revitalising and moisturising. This makes it suitable for all skin types and all ages.

The Neroli Oil stimulates cell regeneration and prevents broken capillaries.

Oils from Rosehip Seed, Borage, Jojoba, and Squalene from Olive Oil increases the moisture content of the skin and improves resilience. Skin elasticity and lustre is significantly improved.

Rosehip Seed Oil helps the skin rejuvenate.

Borage Oil increases the cells' oxygen absorption and resilience and prevents dry skin.

The Squalene from Olive Oil increases cell division and is moisturising and balancing. It prepares the skin for the Vitamin A in the Rosehip Oil which is revitalising and treats dark spots.

Face Balm Moist can be used during both day and night depending on skin type and weather. The balm melts into the skin and increases the moisture content. Face Balm Moist provides good protection against cold and wind and is therefore suitable during the winter months. It can, when the air is dry, be used as day cream.

### Directions for use:

Take a small amount of Face Balm Moist and warm between the fingertips before applying to the face.

Use a suitable product around the eyes: Eye Cream, Eye Cream More, Eye Balm or Eye Gel.

Self-preserving system.

*Ingredients: Simmondsia Chinensis (Jojoba) Seed Oil, Cera Flava (Beeswax), Squalane, Caprylic/Capric Triglyceride, Butyrospermum Parkii (Shea) Butter, Persea Gratissima (Avocado) Oil, Phytosterols, Borago Officinalis (Borage) Seed Oil, Rosa Canina (Rose Hip) Fruit Oil, Olea Europaea (Olive) Fruit Oil, Citrus Aurantium (Bitter Orange) Flower Oil, Sorbitan Oleate, Helianthus Annuus (Sunflower) Seed Oil, Rosmarinus Officinalis (Rosemary) Leaf Oil, Ascorbyl Palmitate, Tocopheryl Acetate, Limonene\*, Linalool\*, Geraniol\*, Farnesol\*. \*From the essential oils.*





## Face Balm Gentle

- Soothing balm with Sea Buckthorn, for all skin types
- Perfect for facial massage
- Provides good protection against cold and wind

Face Balm Gentle is a smooth balm with a rich composition of plant oils and essential oils such as Orange, Lavender, Neroli and Olibanum which is nourishing, soothing and strengthens the skin barrier. Contains Sea Buckthorn Oil that is moisturising and good for sensitive skin. Suitable for all skin types, even sensitive.

Oils from Rosehip Seed, Borage, Jojoba and Squalene from Olive Oil increases the moisture content of the skin and improves resilience. The skin's luster and elasticity is significantly improved.

Sea Buckthorn Oil is rich in antioxidants, fatty acids and Vitamin C. It has beneficial properties for mucous membranes and skin damage. Clinical studies have proven Sea Buckthorn Oil to accelerate and promote healing of the skin, including burns and atopic dermatitis. The oil also helps the cells to renew and treats dry mucous membranes.

Neroli Oil comes from the flowers of the bitter orange tree. It soothes and calms the skin, stimulates cell regeneration and prevents broken capillaries. The oil is used to treat stretch marks, wrinkles and damaged skin. It is mentally stimulating and soothing to the nervous system.

Rosehip Seed Oil helps skin rejuvenate.

The Squalene from Olive Oil increases cell division and is moisturising and balancing. It prepares the skin for the Vitamin A in the Rosehip Seed Oil which is revitalising and treats dark spots.

Borage Oil increases the cells' oxygen absorption, resilience and prevents dry skin. Olibanum Oil, derived from the resin of the Olibanum Tree, is strengthening, prevents wrinkles and stimulates the cells.

Lavender Oil stimulates cell regeneration, acts balancing, purifying and soothing.

### Directions for use:

Take a small amount of Face Balm Gentle and warm between the fingertips before applying to the face.

Use a suitable product around the eyes: Eye Cream, Eye Cream More, Eye Balm or Eye Gel.

Self-preserving system.



*Ingredients: Simmondsia Chinensis (Jojoba) Seed Oil, Cera Flava (Beeswax), Squalane, Caprylic/ Capric Triglyceride, Butyrospermum Parkii (Shea) Butter, Hippophae Rhamnoides (Sea Buckthorn) Oil, Persea Gratissima (Avocado) Oil, Phytosterol, Borago Officinalis (Borage) Seed Oil, Rosa Canina (Rose Hip) Fruit Oil, Olea Europaea (Olive) Fruit Oil, Helianthus Annuus (Sunflower) Seed Oil, Rosmarinus Officinalis (Rosemary) Leaf Oil, Ascorbyl Palmitate, Tocopheryl Acetate, Citrus Aurantium Dilcis (Orange) Peel Oil, Lavendula Angustifolia (Lavender) Oil, Citrus Aurantium (Bitter Orange) Flower Oil, Citrus Aurantium (Petitgrain) Leaf Oil, Olibanum, Limonene\*, Linalool\*, Geraniol\*, Farnesol\*. \*From the essential oils.*

## Face Balm Supplement

- Active balm for mature and dry skin
- Perfect for facial massage
- Provides good protection against cold and wind

Face Balm Supplement is a smooth balm with a rich composition of plant oils and essential oils of Olibanum, Neroli, and Lemongrass which are nourishing, energising and revitalising. Stimulates tired and dull skin.

Olibanum Oil, derived from the resin of the Olibanum Tree, is strengthening, prevents wrinkles and stimulates the cells.

Neroli Oil comes from the flowers of the bitter orange tree. It soothes and calms the skin, stimulates cell regeneration and prevents broken capillaries. The oil is used to treat stretch marks, wrinkles and damaged skin.

Lemongrass Oil stimulates the skin's moisture production and binds moisture. The oil cleanses the lymphatic system and strengthens the connective tissue.

Rosehip Seed Oil, Jojoba Oil and Borage Oil increases the moisture content of the skin and improves resilience. The Squalene from Olive Oil increases cell division and is moisturising and balancing. It prepares the skin for the Vitamin A in the Rosehip Seed Oil, which is revitalising and treats dark spots.



### Directions for use:

Take a small amount of Face Balm Supplement and warm between the fingertips before applying to the face.

Use a suitable product around the eyes: Eye Cream, Eye Cream More, Eye Balm or Eye Gel.

Self-preserving system.

*Ingredients: Simmondsia Chinensis (Jojoba) Seed Oil, Cera Flava (Beeswax), Squalane, Caprylic/Capric Triglyceride, Persea Gratissima (Avocado) Oil, Phytosterols, Butyrospermum Parkii (Shea) Butter, Borago Officinalis (Borage) Seed Oil, Rosa Canina (Rose Hip) Fruit Oil, Boswellia Carterii Gum Oil (Olibanum), Cymbopogon Citratus (Lemongrass) Leaf Oil, Citrus Aurantium (Bitter Orange) Flower Oil, Rosmarinus Officinalis (Rosemary) Leaf Extract.*

## Lip Care

- Protective and moisturising lip balm
- Two kinds: Vanilla and Mentha

Lip Care makes your lips soft and smooth.

Lip Care Mentha is a lip balm with Peppermint Oil.

Lip Care Vanilla is a lip balm with real Vanilla Extract from Madagascar.

The skin on the lips is really delicate, between 3-5 layers of skin cells, compared with the 15 layers on the rest of the body. They are especially sensitive to cold and wind and can have difficulty producing enough fat. This is especially true if you have previously used mineral oil on them. Common ingredients in ordinary lip balm is tallow (animal fat) or mineral oils such as vaseline, paraffin and petroleum.

Mineral oil is a cheap ingredient found in most skin care products. Mineral oil dries out the lips and supplies no vitamins. The oil can be replaced with vegetable oil (from plants).

Vegetable oil is much more expensive, but in return creates no addiction and helps and protects the lips. There are people who always want to have the feeling of lip balm on the lips, but that is another addiction. It may take some time to come to terms with an addiction to mineral oil, depending on to what extent mineral oil has been used.

Lip Care makes the lips moisturised and fine lines around the mouth are less visible. It is very caring and stays for a long time on the lips. Effective to treat dry and cracked lips. The Beeswax used is refined from pollen, therefore suitable for pollen allergy sufferers.

The ingredients provide a natural SPF 4.

### Directions for use:

Lips who have been exposed to mineral oil from lip balm or lipstick can be peeled with AHA & Jojoba Peeling. Use circular motions to remove skin flakes. Follow up with Lip Care.

Use Lip Care as a primer before applying Lip Care Colour or Lip Gloss.

Tip: Try Lip Care on dry and cracked cuticles.

Self-preserving system.

*Ingredients: Ricinus Communis (Castor) Seed Oil, Cera Alba (Beeswax), Olea Europaea (Olive) Fruit Oil, Butyrospermum Parkii (Shea) Butter, Simmondsia Chinensis (Jojoba) Seed Oil, Copernicia Cerifera (Carnauba) Wax, Caprylic/Capric Triglyceride, Mentha Arvensis (Corn Mint) Leaf Oil, Vanilla Planifolia Fruit Oil, Helianthus Annuus (Sunflower) Seed Oil, Rosmarinus Officinalis (Rosemary) Leaf Oil, Limonene\*. \*From the essential oils.*



## Lip Care Outdoor

- Protective and softening
- Contains protective Titanium Dioxide

Lip Care Outdoor is a lip balm with soothing Geranium Oil and protective Titanium Dioxide that protects and softens your lips in the best way.

Geranium Oil has many benefits and is antibacterial, heals wounds, is anti-inflammatory and haemostatic. Can be used to heal: wounds, burns, sunburn, psoriasis, dry eczema and skin cracking.

Titanium Dioxide is a mineral that stays on the skin surface and reflects the sun rays. The Titanium Dioxide does not penetrate the skin, and does not hide the skin's warning signals. The skin turns red when exposed to more sun than it can handle.

Titanium Dioxide is the best filter to use as sunscreen, and DERMANORD has used this oxide since 1996. It is continuously recommended by dermatologist and safe for children.

Self-preserving system.



*Ingredients: Ricinus Communis (Castor) Seed Oil, Cera Alba (Beeswax), Olea Europaea (Olive) Fruit Oil, Butyrospermum Parkii (Shea) Butter, Simmondsia Chinensis (Jojoba) Seed Oil, Caprylic/Capric Triglyceride, Copernicia Cerifera (Carnauba) Wax, Titanium Dioxide, Mentha Arvensis (Corn Mint) Leaf Oil, Pelargonium Graveolens (Rose Geranium) Flower Oil, Alumina\*\*, Polyhydroxystearic Acid, Silica, Helianthus Annuus (Sunflower) Seed Oil, Rosmarinus Officinalis (Rosemary) Leaf Oil, Limonene\*, Linalool\*, Geraniol\*, Citral\*, Citronellol\*. \*From the essential oils. \*\*Bonded to Titanium Dioxide.*

## Papaya Peeling

- Gentle peeling that is suitable for all skin types
- Prevents blackheads

Papaya Peeling is a facial enzyme peel containing Papain, an extract from papaya that gently dissolves dead skin cells and prevents blackheads. It does not affect the underlying skin. Papaya Peeling suits even the most sensitive skin.

### Directions for use:

Papaya Peeling is applied to clean, dry skin.

Massage onto face for one to two minutes. Then, add water and continue to massage until the peeling becomes a cream. When the small grains have dissolved, rinse with water.

You can also moisten a soft facial brush and massage the face. Rinse off with lukewarm water and finish with Freshener.

For very sensitive skin, mix the Papaya Peeling with water and then apply it to the face without rubbing. Leave it on for a few minutes as a mask, and then rinse off.

Recommended to use 1-2 times per week.

Hold the tube with the cap upward when you open the container. Do this to prevent the product from spilling out. Do not shake the product because then it becomes loose and runny.

Moisturising Treatment: Apply Papaya Peeling and exfoliate your skin. Moisten your fingertips with water and massage until the granules have dissolved. Apply Face Mask Moist on top of the peeling and leave on over night. Alternatively, leave it on for at least 20 minutes. Exfoliation and facial masks go hand in hand.

Self-preserving system.



*Ingredients: Helianthus Annuus (Sunflower) Seed Oil, Brassica Napus (Rape) Seed Oil, Cetearyl Alcohol, Maltodextrin, Cetearyl Glucoside, Carica Papaya (Papaya) Fruit, Simmondsia Chinensis (Jojoba) Seed Oil, Olea Europaea (Olive) Fruit Oil, Citrus Limon (Lemon) Peel Oil, Citrus Paradisi (Grapefruit) Peel Oil, Juniperus Communis (Juniper) Oil, Lavandula Angustifolia (Lavender) Oil, Rosmarinus Officinalis (Rosemary) Leaf Oil, Limonene\*, Linalool\*, Citral\*. \*From the essential oils.*

## AHA & Jojoba Peeling

- Prevents blackheads and acne
- Has a brightening effect on temporary brown spots

AHA & Jojoba Peeling is a combination of natural Lactic Acid (AHA) from sugar beets and small grains extracted from Jojoba Oil. The grains have the perfect size and shape to gently remove dead skin cells without irritating the skin.

Skin cells are continuously replaced. If the process of the skin shedding dead skin cells is slow, then the skin can be perceived as dry. The skin loses its luster, and blackheads form more easily.

The Lactic Acid prevents lumps of melanine to form in the skin and has a brightening effect on dark spots.

### Directions for use:

Apply the AHA & Jojoba Peeling on clean dry skin.

Massage with gentle, circular motions. Avoid skin around the eyes, even irritated skin (pimples).

For sensitive skin, apply a thin layer and leave it on. The skin will then be carefully peeled to suit your specific needs. Rinse with water. Follow up with Freshener.

Use AHA & Jojoba Peeling as a facial exfoliator twice a week or as needed.

AHA & Jojoba Peeling is also suitable for manicure or pedicure. Massage cuticles with AHA & Jojoba Peeling.

Rinse off and finish by massaging Myrrh Nail & Cuticle Oil onto the nail and cuticle.

Clearing Treatment: Apply AHA & Jojoba Peeling and exfoliate your skin. Wipe off left over granules. Apply Face Mask Clearing and leave it on over night. Rinse off in the morning. Exfoliation and facial masks go hand in hand.

Self-preserving system.

*Ingredients: Aqua Purificata/Water, Ricinus Communis (Castor) Seed Oil, Cetearyl Alcohol, Hydrogenated Jojoba Wax, Simmondsia Chinensis (Jojoba) Seed Oil, Cetearyl Glucoside, Lactic Acid, Xanthan Gum, Sodium Lactate, Glyceryl Caprylate, Levulinic Acid, Sodium Levulinate, Glycerin (Vegetable), Helianthus Annuus (Sunflower) Seed Oil, Mentha Arvensis (Corn Mint) Leaf Oil, Rosmarinus Officinalis (Rosemary) Leaf Oil.*

## Blueberry Seed Mask

- Strengthening and moisturising for better resilience
- Soothing and cooling
- Suitable for all skin types
- Cream mask - does not harden

Blueberry Seed Mask with nourishing and protective Blueberry Seed Oil is a soothing facial mask that strengthens the skin and gives it better resilience. Blueberry Seed Mask is a cream mask that does not harden. It is suitable for all skin types and adds plenty of moisture. The mask is beneficial to skins with superficial blood vessels, sensitive and easily irritated skin.

Blueberry Seed Oil contains 70% of essential fatty acids and phytosterols which stimulate cell regeneration.

The oil also contains Vitamin E, which helps the skin retain its suppleness and reduces the first signs of aging. Vitamin E also serves as a preservative.

Biosaccharide Gum-1 (from soy and corn) consists of sugar fucose which has been shown in studies to be anti-inflammatory.

Beeswax is protective, emollient and soothing to irritated skin.

### Directions for use:

Blueberry Seed Mask is applied to cleansed skin. Leave on for at least ten minutes, preferably longer. Rinse off with warm water and follow up with Freshener. For best result, use twice per week. The mask can be left on overnight.  
Suitable for all skin types.

When Vitamin E penetrates the skin, the skin can get a bit rosy.

Self-preserving system.



*Ingredients: Aqua Purificata/Water, Simmondsia Chinensis (Jojoba) Seed Oil, Vaccinium Myrtillus (Blueberry) Seed Oil, Cetearyl Alcohol, Butyrospermum Parkii (Shea) Butter, Glycerin (Vegetable), Cetearyl Glucoside, Sodium PCA, Xanthan Gum, Sodium Levulinate, Sodium Anisate, Lactic Acid, Lavandula Angustifolia (Lavender) Oil, Citrus Aurantium (Bitter Orange) Flower Oil, Helianthus Annuus (Sunflower) Seed Oil, Rosmarinus Officinalis (Rosemary) Leaf Oil, Linalool.*

## Face Mask Moist

- Moisturising and smoothing facial mask for all skin types
- Strengthens the skin and improves the structure
- Softens dry lips

Face Mask Moist with essential oils of Neroli and Mandarin is a moisturising mask for all skin types. It strengthens the skin, improves structure and is smoothing.

Face Mask Moist provides the skin with moisture by using various moisturising herbal salts and Jojoba Oil. Strengthening Mandarin Oil and Neroli Oil is used to facilitate cell renewal and to enhance the effect further.

Neroli Oil comes from the flowers of the bitter orange tree. It soothes and calms the skin, stimulates cell regeneration and prevents broken capillaries. The oil is used to treat stretch marks, wrinkles and damaged skin. It is mentally stimulating and soothing to the nervous system.

Cold pressed Mandarin Oil, from the peel of mandarins, is a gentle, strengthening and calming oil.

Face Mask Moist contains a larger amount of active ingredients than what is possible to add to a regular facial cream. The mask provides a treatment-effect.

People suffering from citrus allergies may be sensitive to the Mandarin Oil in Face Mask Moist.

### Directions for use:

Face Mask Moist is applied to cleansed skin. Leave the mask on for at least 10-20 minutes. Remove it with warm water and follow up with suitable Freshener.

Used preferably after AHA & Jojoba Peeling or Papaya Peeling twice a week. The skin will absorb the active ingredients in the mask better when the skin is newly exfoliated.

Face Mask Moist can, if necessary, be used daily as a cure for a maximum of one week.

Face Mask Moist can also be applied in the evening and left on overnight.

Self-preserving system.



*Ingredients: Aqua Purificata/Water, Simmondsia Chinensis (Jojoba) Seed Oil, Glycerin (Vegetable), Cetearyl Alcohol, Cetearyl Glucoside, Sodium Levulinate, Sodium Anisate, Citrus Aurantium Dulcis (Orange) Peel Extract, Xanthan Gum, Butyrospermum Parkii (Shea) Butter, Citrus Reticulata (Mandarin Orange) Oil, Tocopheryl Acetate, Tocopherol, Lactic Acid, Citrus Aurantium (Bitter Orange) Flower Oil, Rosmarinus Officinalis (Rosemary) Leaf Extract, Limonene\*, Linalool\*. \*From the essential oils.*



## Face Mask More

- Moisturising facial mask for all skin types, even sensitive
- Strengthens the skin and improves the structure
- Smoothing, balancing and firming
- Energising

Face Mask More with extracts from the Persian Silk Tree and Sea Buckthorn Oil, and with essential oils of Neroli and Olibanum provides firming, moisturising and calming effects for all skin types. Face Mask More contains a larger amount of active ingredients than what is possible to add to a regular facial cream. The mask provides a treatment effect.

It provides the skin with moisture and fatty acids with the help of Sea Buckthorn Oil and Jojoba Oil.

The extract from the Persian Silk Tree (extracted from the bark) has a firming effect on the skin which gives this mask its properties.

Sea Buckthorn Oil is rich in antioxidants, fatty acids and Vitamin C. Has beneficial properties on troublesome mucous membranes and skin damage. Clinical studies have proven Sea Buckthorn Oil to accelerate and promote healing of the skin, including burns and atopic dermatitis. The oil also helps the cells to renew and treats dry mucous membranes.

Neroli Oil comes from the flowers of the bitter orange tree. It soothes and calms the skin, stimulates cell regeneration and prevents broken capillaries. The oil is used to treat stretch marks, wrinkles and damaged skin. It is mentally stimulating and soothing to the nervous system.

Olibanum Oil, derived from the resin of the olibanum tree, is strengthening, prevents wrinkles and stimulates the cells.

### Directions for use:

Face Mask More is applied to cleansed skin. Leave the mask on for at least 10-20 minutes. Remove with warm water and follow up with suitable Freshener.

Used preferably after AHA & Jojoba Peeling or Papaya Peeling twice a week. The skin will absorb the active ingredients in the mask better when the skin is newly exfoliated.

Face Mask More can, if necessary, be used daily as a cure for maximum one week.

Face Mask More can also be applied in the evening and left on overnight.

Self-preserving system.

*Ingredients: Aqua Purificata/Water, Simmondsia Chinensis (Jojoba) Seed Oil, Glycerin (Vegetable), Cetearyl Alcohol, Cetearyl Glucoside, Albizia Julibrissin (Mimosa) Bark Extract, Darutoside, Hippophae Rhamnoides Fruit Oil, Sodium Levulinate, Sodium Anisate, Xanthan Gum, Butyrospermum Parkii (Shea) Butter, Tocopheryl Acetate, Tocopherol, Lactic Acid, Citrus Aurantium (Bitter Orange) Flower Oil, Olibanum, Daucus Carota Sativus (Carrot) Oil, Rosmarinus Officinalis (Rosemary) Leaf Oil, Linalool\*. \*From the essential oils.*



## Face Mask Gentle

- Clay mask with White Clay
- Deep cleansing and calming
- Suitable for all skin types

Face Mask Gentle is a balancing facial mask with White Clay. The clay has an astringent effect on pores and superficial blood vessels. The mud is enriched with a combination of essential oils that help to strengthen the arteries and reduce redness of the skin.

Lavender Oil stimulates cell regeneration, is balancing, purifying and soothing.

Neroli Oil comes from the flowers of the bitter orange tree. It soothes and calms the skin, stimulates cell regeneration and prevents broken capillaries. The oil is used to treat stretch marks, wrinkles and damaged skin. It is mentally stimulating and soothing to the nervous system.

Petitgrain (Bitter Orange Leaf Oil) is a cleansing and antiseptic oil.

Olibanum Oil, derived from the resin of the olibanum tree, is strengthening, prevents wrinkles and stimulates the cells.

### Directions for use:

Apply a thin layer of Face Mask Gentle to cleansed skin. Leave the mask on for minimum five minutes. Remove with warm water and follow up with suitable Freshener.

Used preferably after AHA & Jojoba Peeling or Papaya Peeling twice a week. The skin will absorb the active ingredients in the mask better when the skin is newly exfoliated.

We recommend using the mask at least twice a week for best result.

Self-preserving system.

*Ingredients: Aqua Purificata/Water, Clay, Ricinus Communis (Castor) Seed Oil, Cetearyl Alcohol, Glyceryl Stearate Citrate, Glyceryl Caprylate, Sodium Levulinate, Sodium Anisate, Glycerin (Vegetable), Simmondsia Chinensis (Jojoba) Seed Oil, Xanthan Gum, Citrus Sinensis (Sweet Orange) Peel Oil, Lavandula Angustifolia (Lavender) Oil, Citrus Aurantium (Bitter Orange) Flower Oil, Citrus Aurantium (Bitter Orange) Leaf/Twig Oil, Lactic Acid, Boswellia Carterii (Olibanum) Gum Oil, Rosmarinus Officinalis (Rosemary) Leaf Extract, Limonene\*, Linalool\*.  
\*From the essential oils.*



## Face Mask Clearing

- Deep cleansing facial mask for all skin types
- Good for treating pimples - apply to the affected area during the day
- Do NOT use in sunlight

Face Mask Clearing contains deep cleansing Silica and the antioxidant Vitamin C.

Silica is one of the minerals that are considered most important for the skin. Silica dissolves clogged pores and binds bacteria, grease and dirt. The result is a healthier and more fresh looking skin.

Silica is used not only for skin care, but also to treat stomach problems. Skin, hair and nails benefit from an extra supply of Silica from the inside.

The Vitamin C used in products from MARIA ÅKERBERG comes from fruit, in this case from oranges. Vitamin C acts as a preservative and antioxidant.

Face Mask Clearing "draws out impurities" and appears astringent on the pores. It is also suitable when there is fluid in the skin, such as blisters, which can cause inflammation.

Acne skin: The mask is excellent on pimples, though it may sting slightly. If necessary, the mask can be applied point wise multiple times per day and can also be left on overnight. This mask makes the skin sensitive to sunlight and may cause brown spots to occur, therefore Face Mask Clearing should not be used in sunlight.

Stretch marks and loose skin can be tightened and appear less visible with Face Mask Clearing.

### Directions for use:

Apply Face Mask Clearing to cleansed skin. Used preferably after AHA & Jojoba Peeling twice a week. The skin will absorb the active ingredients in the mask better when the skin is newly exfoliated. Avoid the lips, the skin around the eyes and very thin or irritated skin. The mask dries after a few minutes. Leave on for 5-10 minutes.

Use the mask once per week for normal to dry skin.

For oily skin, 1-7 times per week.

Can be applied on problem areas daily as a cure for maximum two weeks.

Facial treatment: Use Face Mask Clearing after extracting the pores to disinfect the skin and tighten pores.

Rinse off with warm water and follow up with suitable Freshener.

Self-preserving system.

*Ingredients: Aqua Purificata/Water, Silica, Xanthan Gum, Citrus Sinensis (Sweet Orange) Peel Extract, Sodium Levulinate, Sodium Anisate, Lactic Acid, Biosaccharide Gum-1, Glycerin (Vegetable), Rosmarinus Officinalis (Rosemary) Leaf Extract.*



## Dark Chocolate Mask

- Moisturising facial mask
- Chocolate scented cream mask that does not harden
- Suitable for all skin types

Dark Chocolate Mask contains Cocoa Butter and Cocoa that adds fatty acids and antioxidants, and is suitable for all skin types. Your skin is left soft, smooth and with a slight scent of chocolate.

Dark Chocolate Mask adds lots of antioxidants which has an anti-aging effect, just as antioxidants in fruits and vegetables. It is beneficial for all ages! Suitable for men, women and teenagers. When the mask is applied, the skin is chocolate-coloured and it tends to be appreciated at events such as "after work", bridal showers etc.

### Directions for use:

Apply Dark Chocolate Mask to cleansed skin. Leave the mask on for at least ten minutes. Remove with warm water and follow up with suitable Freshener. Your skin feels renewed!

Used preferably after AHA & Jojoba Peeling twice a week. The skin will absorb the active ingredients in the mask better when the skin is newly exfoliated.

Dark Chocolate Mask can if necessary be used daily as a treatment, for maximum one week.

There is no danger to the skin if the Dark Chocolate Mask is left on overnight. However, a small rash may appear due to the skin receiving too much goodness.

Dark Chocolate Mask may stain fabric.

Self-preserving system.



Ingredients: *Aqua Purificata/Water, Simmondsia Chinensis (Jojoba) Seed Oil, Theobroma Cacao (Cocoa) Seed Butter, Glycerin (Vegetable), Sodium PCA, Cetearyl Alcohol, C14-22 Alcohols, C12-20 Alkyl Glucoside, Sodium PCA, Xanthan Gum, Glyceryl Caprylate, Levulinic Acid, Sodium Levulinate, Cetearyl Glucoside, Sodium Lactate, Lactic Acid, Tocopherol, Tocopheryl Acetate, Rosmarinus Officinalis (Rosemary) Leaf Extract, Helianthus Annuus (Sunflower) Seed Oil.*

## Facial Kit Normal Skin

Olive Cleansing 100 ml  
Neroli Freshener 125 ml  
Face Lotion Moist 50 ml  
Royal Facial Oil Moist 10 ml  
Facial Sponge of Cellulose

**Olive Cleansing** is a cleansing cream with Olive Oil for dry, sensitive and mature skin. Cleanses the skin and removes makeup.

**Neroli Freshener** is a moisturising Freshener without alcohol. It finalizes the cleansing and prepares the skin for the upcoming products.

**Face Lotion Moist** is a facial cream for normal to dry skin.

**Royal Facial Oil Moist** is a smoothing and moisturising facial oil that is balancing for the skin. It also increases the cell's oxygen uptake and resilience. Use alone or under one of our facial creams.

**Facial Sponge of Cellulose** is a sponge meant for removing cleansing products.



## Facial Kit Oily Skin

Foaming Wash Clearing 125 ml

Lemon Freshener 125 ml

Face Lotion Clearing 50 ml

Royal Facial Oil Clearing 10 ml

Facial Sponge of Cellulose

**Foaming Wash Clearing** is a foaming cleansing gel for normal/mixed skin that is not sensitive.

**Lemon Freshener** is a moisturising Freshener without alcohol. It finalizes the cleansing and prepares the skin for the upcoming products.

**Face Lotion Clearing** is a facial cream for mixed and oily skin. It is balancing but not dehydrating and is therefore suitable to start with when switching from mineral oil based products to organic with a vegetable oil base. Reduces large pores.

**Royal Facial Oil Clearing** is a smoothing, purifying and balancing oil. Use alone or under one of our facial creams.

**Facial Sponge of Cellulose** is a sponge meant for removing cleansing products.



## Facial Kit Mature Skin

Olive Cleansing 100 ml  
Flower Freshener 125 ml  
Face Lotion More 50 ml  
Royal Facial Oil Supplement 10 ml  
Facial Sponge of Cellulose

**Olive Cleansing** is a cleansing cream with Olive Oil for dry, sensitive and mature skin. Cleanses the skin and removes makeup.

**Flower Freshener** is a moisturising Freshener without alcohol. It finalizes the cleansing and prepares the skin for the upcoming products.

**Face Lotion More** is a facial cream for mature skin. Restores the skin's elasticity and resilience.

**Royal Facial Oil Supplement** is a revitalizing oil for dry and mature skin. The oil is used alone or underneath any of our facial creams.

**Facial Sponge of Cellulose** is a sponge meant for removing cleansing products.



## Facial Kit Sensitive Skin

Olive Cleansing 100 ml

Neroli Freshener 125 ml  
Face Dream 50 ml  
Royal Facial Oil More 10 ml  
Facial Sponge of Cellulose

**Olive Cleansing** is a cleansing cream with Olive Oil for dry, sensitive and mature skin. Cleanses the skin and removes makeup.

**Neroli Freshener** is a moisturising Freshener without alcohol. It finalizes the cleansing and prepares the skin for the next products.

**Face Dream** is an oily facial creme for very dry and sensitive skin. It contains Lavender and Calendula that protects the skin against external stressors.

**Royal Facial Oil More** is a smoothing and moisturising oil which increases the cell's oxygen uptake and resilience.

**Facial Sponge of Cellulose** is a sponge meant for removing cleansing products.

